

FC WISCONSIN

PARTNERSHIP OPPORTUNITIES



You're invited to join in the success of FC Wisconsin by becoming a partner.

Your investment will contribute to the continued success and growth of FC Wisconsin.

CONTACTS: Lisa Leffel, Parent Volunteer
lisa.leffel@wlc.edu | 414.640.6236

Ben Shepherd, Club Co-Director of Coaching
ben.shepherd@fcwisconsinsoccer.com | 864.425.9630

FC Wisconsin operates under 501(c) (3) EIN 39-1994134 at P.O. Box 876 in Germantown, Wisconsin 53022

About

Soccer is the number one sport in the world. Its popularity has exploded across the United States surpassing football, baseball, and basketball as the most played sport among our nation's youth.

FC Wisconsin was founded in 2012. In just a few short years, the club has achieved great success and growth. FC Wisconsin exists to improve the long-term development of boys and girls soccer players ages 6-19 years in Wisconsin through individual attention, small coach-to-player ratios, ongoing coaching education, and a passion for helping players maximize their potential in a "club family" environment.



Growth

At its founding just 6 years ago, FC Wisconsin welcomed 191 players – 126 boys and 65 girls. Now, the club has grown to more than 700 players who travel from throughout the state to be a part of FC Wisconsin. Part of the growth of the club included adding a training and playing environment in Green Bay (boys) and Verona (girls) in addition to its founding location in Germantown.

FC Wisconsin has more than 40 highly qualified, licensed coaches that train and direct players during the club soccer season that runs from August through June. The clubs are led by directors Ben Shepherd and Billy Solberg on the boys' side and Christian Lavers and Hayley Lavers on the girls' side.



College Commitments

While FC Wisconsin has a long history of team success and unprecedented championships in Wisconsin soccer history, the primary focus of the club is to develop players to be successful collegiate student-athletes. The club leads the state in providing a pathway for players to play at the collegiate level. Nearly 90% of every graduating class moves on to play college soccer. The

coaching staff helps players develop, be identified and recruited, and commit to the top college programs across the country. FC Wisconsin players succeed in college and regularly earn NCAA post-season and conference awards, some even move on to play professionally.



National Platform

FC Wisconsin teams play on a local, state, and national level. This year alone teams will travel to Illinois, Missouri, Florida, Virginia, Michigan, Ohio, California, Colorado, Indiana, Texas, Minnesota, Arizona, Washington, and Pennsylvania.

FC Wisconsin teams compete in the following leagues:

- Boys and Girls Elite Clubs National League
(the top development and competition leagues in the country)
- National Premiere League
- U.S. Soccer's Midwest Regional League
- Wisconsin State League

Social Media

FC Wisconsin has a very active social media presence. With daily, sometimes even multiple postings a day, FC Wisconsin has amassed a following of nearly 3,500 fans on social media.

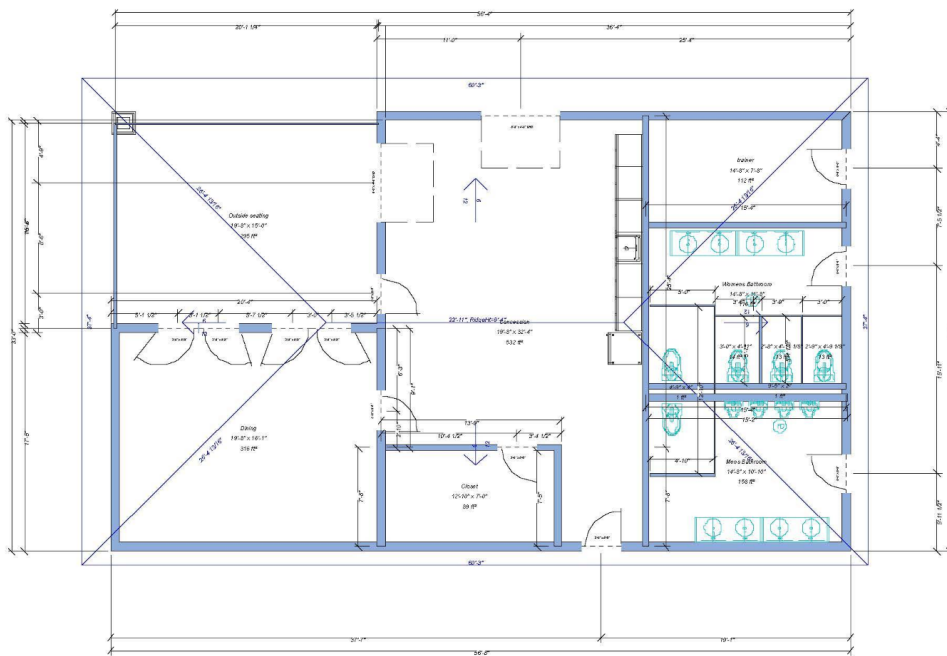


Facilities

FC Wisconsin is committed to providing its players the best facility to train and play. There are just three clubs in Wisconsin that have home turf fields. FC Wisconsin has a grass field and two turf fields at its Germantown location, in addition to grass fields for players in its Green Bay and



Verona regions. Coaches have skillfully mastered training and game schedules to fully maximize field usage seven days a week. FC Wisconsin's turf fields are visited by some 225,000 visitors annually. Although the club has superb turf fields, currently the facilities does not have restrooms, concessions, or a locker room. In addition to fundraising and player fees directed to these projects, we welcome your partnership to make these facilities a reality.



Facility Naming Partnerships

Turf Field Partner | \$150,000

(two partnerships available, one for each field)

- Corporate logo or name printed on the turf for a period of 6 years and post signage identification
- Field will be officially called “{Insert Corporation or Name} Field” whenever referenced as a game or training location by FC Wisconsin, its opponents, and any group that rents the field
- FC Wisconsin’s fields are used by regional, state, and national teams
- The field partner will also receive recognition on the partner wall located on the concession stand, signage at each field with official name, FC Wisconsin website advertising, and social media promotion



Concessions Stand Partner | \$125,000

- Marquee signage of corporate logo or name on the building for a period of 10 years
- The concession stand will be officially called “{Insert Corporation or Name} Concessions Stand” whenever referenced
- All paper products (cups, plates, and napkins) used within the concession stand will include the corporate logo or name of the concessions stand partner for a period of 10 years
- The concessions stand partner will also receive recognition with hyperlinks on the FC Wisconsin website and social media promotion

Locker Room Partner | \$75,000

- Corporate logo or name signage on the building for a period of 10 years
- The locker room partner will also receive recognition on the partner wall located on the concession stand, FC Wisconsin website advertising with hyperlink, and social media promotion



Apparel Naming Rights

Game Uniform Front | \$50,000

- Corporate logo or name printed front and center on more than 2,100 professional quality, Adidas uniforms worn by FC Wisconsin players competing at the regional, state, and national levels for a period of 2 years
- The game uniform partner will also receive field signage, FC Wisconsin website advertising including hyperlinks, and social media promotion
- A booth at the FC Wisconsin Indoor Tournament that welcomes more than 1,400 players and 5,000 spectators annually

Game Uniform Back or Front Leg of Shorts | \$25,000

- Corporate logo or name printed on the lower back center or front left leg of more than 2,100 professional quality Adidas uniforms worn by FC Wisconsin players competing at the regional, state, and national levels for a period of 2 years
- The game uniform partner will also receive recognition on the partner wall located on the concession stand, FC Wisconsin website advertising including hyperlink, and social media promotion

Training Jerseys | \$15,000 front | \$2,500 shared back

- Corporate logo or name printed front and center or shared on the back of professional quality training jerseys worn by FC Wisconsin players during tri-weekly training activities and as a warm up prior to each game year round for a period of 2 years
- The training jersey front partner will also receive recognition on the partner wall located on the concession stand, FC Wisconsin website advertising including hyperlink, and social media promotion

